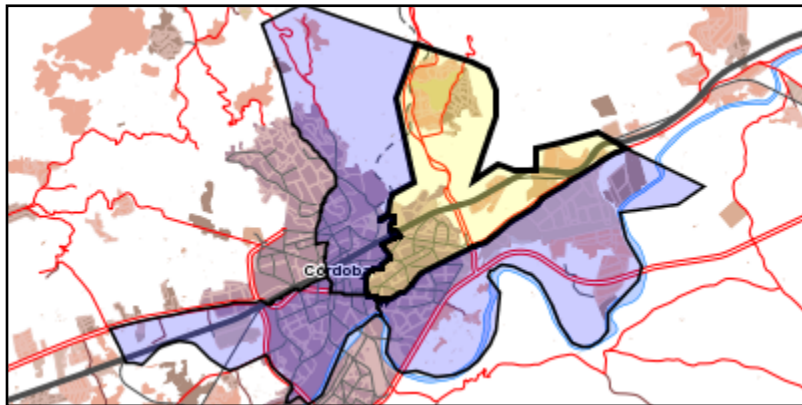




Área de influencia escolar Córdoba

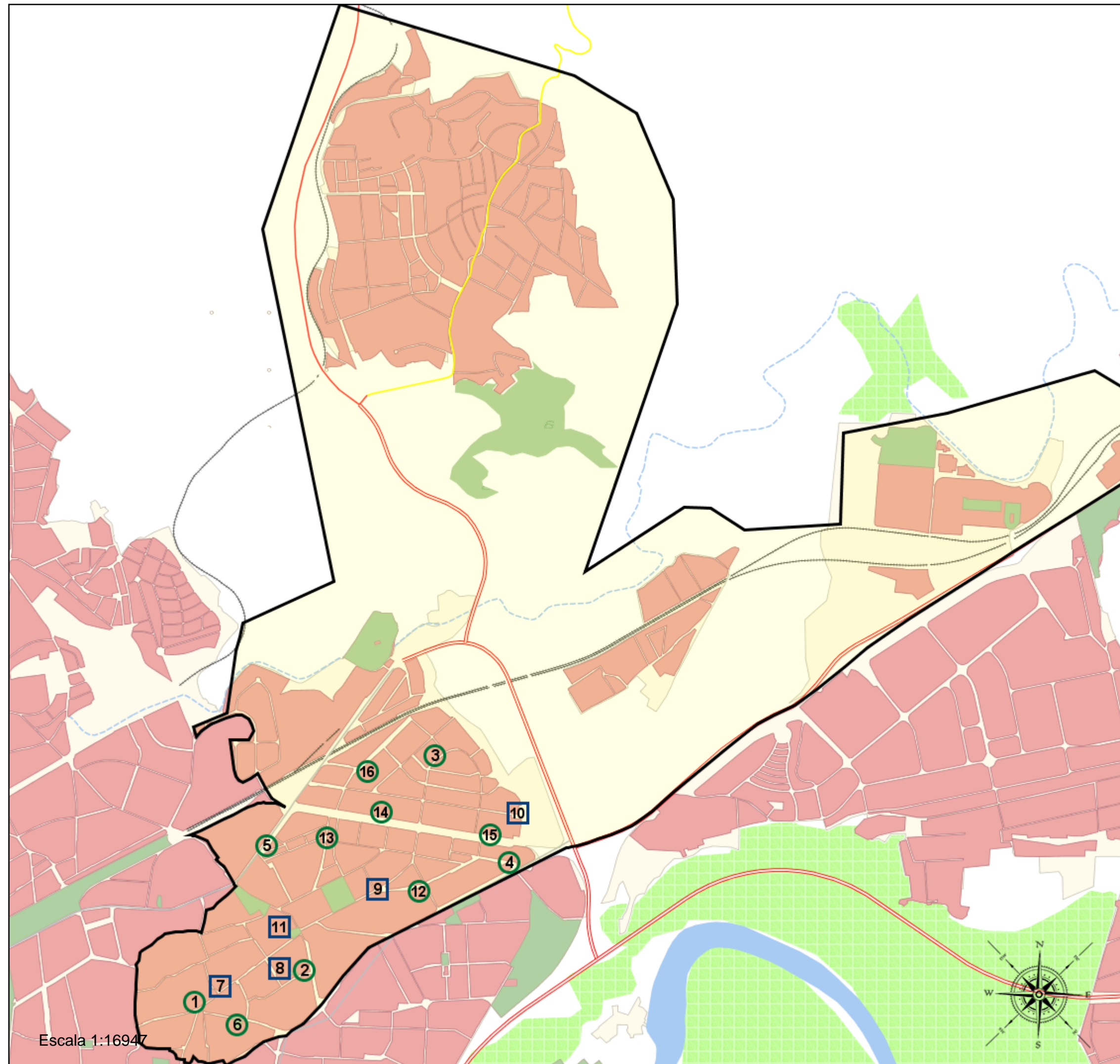
Córdoba_I_P_05
Levante - Fátima IP (Segundo Cic. Infantil/Primaria)

- (1) 14001566 - C.E.I.P. López Diéguez
- (2) 14001608 - C.E.I.P. Condesa de las Quemadas
- (3) 14001670 - C.E.I.P. Aljoxani
- (4) 14001682 - C.E.I.P. Juan de Mena
- (5) 14001748 - C.E.I.P. Alcalde Pedro Barbudo
- (6) 14001864 - C.E.I.P. San Lorenzo
- (7) 14002285 - C.D.P. Jesús Nazareno
- (8) 14002558 - C.D.P. San Francisco de Sales
- (9) 14002650 - C.D.P. Santa María de Guadalupe
- (10) 14002731 - C.D.P. Séneca
- (11) 14003058 - C.D.P. Santísima Trinidad-Trinitarios
- (12) 14003186 - C.E.I.P. Los Califas
- (13) 14007295 - C.E.I.P. Averroes
- (14) 14007441 - C.E.I.P. Juan Rufo
- (15) 14007465 - E.I. Miraflores
- (16) 14600590 - C.E.I.P. Concepción Arenal



Leyenda

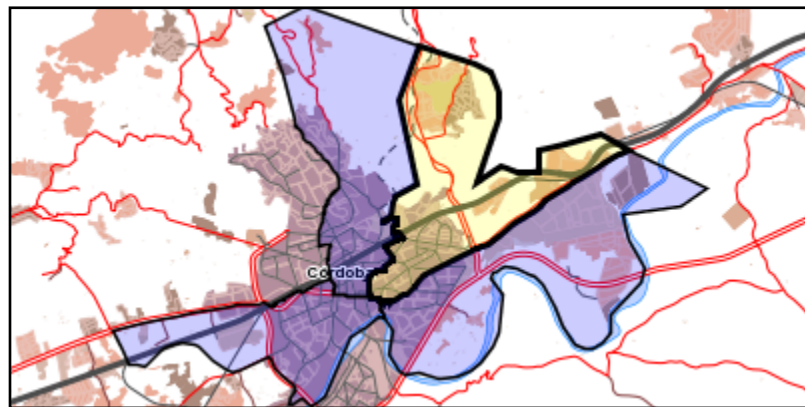
-  Centros públicos
-  Centros concertados



Área de influencia escolar Córdoba

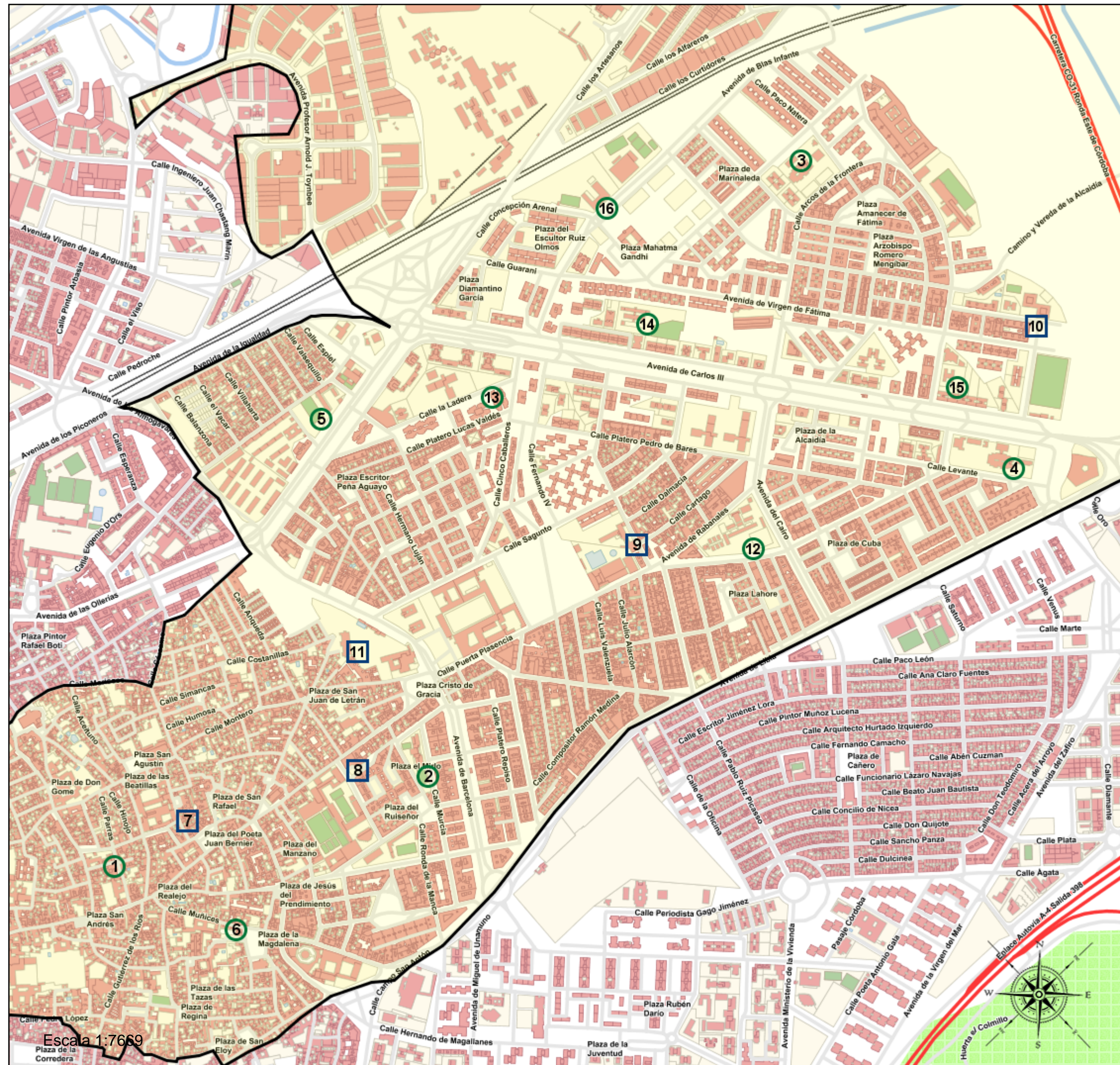
Córdoba_I_P_05
Levante - Fátima IP (Segundo Cic. Infantil/Primaria)

- (1) 14001566 - C.E.I.P. López Diéguez
- (2) 14001608 - C.E.I.P. Condesa de las Quemadas
- (3) 14001670 - C.E.I.P. Aljoxani
- (4) 14001682 - C.E.I.P. Juan de Mena
- (5) 14001748 - C.E.I.P. Alcalde Pedro Barbudo
- (6) 14001864 - C.E.I.P. San Lorenzo
- (7) 14002285 - C.D.P. Jesús Nazareno
- (8) 14002558 - C.D.P. San Francisco de Sales
- (9) 14002650 - C.D.P. Santa María de Guadalupe
- (10) 14002731 - C.D.P. Séneca
- (11) 14003058 - C.D.P. Santísima Trinidad-Trinitarios
- (12) 14003186 - C.E.I.P. Los Califas
- (13) 14007295 - C.E.I.P. Averroes
- (14) 14007441 - C.E.I.P. Juan Rufo
- (15) 14007465 - E.I. Miraflores
- (16) 14600590 - C.E.I.P. Concepción Arenal



Legenda

- Centros públicos
- Centros concertados



Escala 1:7669



INFORME DE VIALES DE CÓRDOBA

NOMBRE NORMALIZADO: Córdoba_I_P_05

NOMBRE ÁREA DE INFLUENCIA: Levante - Fátima IP

Centros del área:

- 14001566 - C.E.I.P. López Diéguez
- 14001608 - C.E.I.P. Condesa de las Quemadas
- 14001670 - C.E.I.P. Aljoxani
- 14001682 - C.E.I.P. Juan de Mena
- 14001748 - C.E.I.P. Alcalde Pedro Barbudo
- 14001864 - C.E.I.P. San Lorenzo
- 14002285 - C.D.P. Jesús Nazareno
- 14002558 - C.D.P. San Francisco de Sales
- 14002650 - C.D.P. Santa María de Guadalupe
- 14002731 - C.D.P. Séneca
- 14003058 - C.D.P. Santísima Trinidad-Trinitarios
- 14003186 - C.E.I.P. Los Califas
- 14007295 - C.E.I.P. Averroes
- 14007441 - C.E.I.P. Juan Rufo
- 14007465 - E.I. Miraflores
- 14600590 - C.E.I.P. Concepción Arenal

Viales incluidos en el área

VIALES DE CÓRDOBA	
Nombre de vía	Rango de portales
AVENIDA AGRUPACION CORDOBA	2, 5, 7, 9, 10, 11, 12, 14, 15, 16, 17, 18, 19, 20, 22, 23, 24, 25, 27, 29, 31, 33
AVENIDA BARCELONA (DE)	1, 2, 3, 4, 5, 6, 7, 8, 9, 10, 11, 12, 13, 14, 15, 16, 17, 18, 20, 22, 24
AVENIDA BLAS INFANTE (DE)	0, 1, 2, 3, 4, 5, 6, 7, 8, 9, 10, 12, 14, 16, 18, 20, 22, 24, 26, 28
AVENIDA CAIRO (DEL)	1, 2, 3, 5, 6, 8, 10, 12
AVENIDA CARLOS III (DE)	1, 2, 3, 4, 6, 7, 8, 9, 10, 11, 12, 13, 14, 15, 16, 17, 18, 19, 20, 21, 22, 23, 24, 25, 26, 27, 28, 29, 30, 31, 32, 33, 34, 35, 36, 37, 38, 39, 40, 41, 42, 43, 44, 45, 46, 47, 48, 49, 51, 53, 55, 57, 59, 61, 63, 65, 67, 69, 71, 73, 75, 77, 79, 81, 83
AVENIDA CHINALES (DE)	2, 3, 4, 5, 6, 7, 8, 9, 10, 11, 12, 13, 14, 16, 17, 18, 19, 20, 21, 26, 27, 29, 30, 31, 32, 34, 36, 38, 41, 44, 45, 46, 47, 48, 49, 50, 56, 57, 58, 59, 60, 61, 62, 63, 64
AVENIDA DOÑA MANUELA	1, 2, 20, 21, 22, 23, 24, 25, 26, 28, 29, 30, 32, 34, 35, 36, 37, 38, 44, 45, 46, 47, 48, 49, 50, 51
AVENIDA IGUALDAD (DE LA)	2, 4, 6, 8, 10, 12, 14, 16, 18, 20, 22, 24, 26, 28, 30, 32, 34, 36, 38, 40, 42, 44, 46, 48, 50, 52, 54, 56, 58, 60, 62, 64, 66, 68, 70, 72, 74, 76, 78, 80, 82, 84
AVENIDA JESUS RESCATADO (DE)	1, 2, 3, 4, 5, 6, 7, 8, 9, 10, 12, 14, 15, 16, 17, 18, 19, 20, 22, 24, 26, 28, 30, 32, 34, 36
AVENIDA LIBIA (DE)	1, 3, 5, 7, 9, 11, 13, 15, 17, 19, 21, 25, 27, 29, 31, 33, 35, 37, 39, 41, 43, 45, 47, 49, 51, 53, 55, 57, 59, 61, 63, 65, 67, 69, 71, 73, 75
AVENIDA PROFESOR ARNOLD J. TOYNBEE	22, 23, 24, 25, 28, 33, 35, 37, 39, 41, 42, 43, 44, 51, 52, 53, 54, 55, 56
AVENIDA RABANALES (DE)	0, 1, 2, 4, 6, 7, 8, 9, 10, 11, 12, 13, 14, 15, 16, 17, 18, 19, 20, 21, 22, 23, 25, 27, 29, 31, 33
AVENIDA ROCIO DURCAL	1, 2, 3, 5, 6, 7, 8, 9, 10, 11, 12, 13, 14, 15, 16, 17, 18, 19, 20, 21, 22, 23, 24, 25, 26, 27, 29, 31, 33, 35, 37, 39, 41, 43, 45, 47, 49, 51
AVENIDA ROCIO JURADO	1, 3, 4, 5, 7, 19, 21, 35
AVENIDA VEINTIOCHO DE FEBRERO (DE)	1, 2, 3, 4, 5, 6, 7, 8, 9, 10, 11, 12, 13, 14, 15, 17, 20, 21, 22, 26, 28, 30, 32, 34, 36, 38, 40, 42, 44, 46, 48
AVENIDA VIÑUELA (DE LA)	1, 2, 3, 4, 5, 6, 7, 8, 9, 10, 11, 12, 13, 14, 15, 16, 17, 18, 19, 20, 21, 22, 23, 24, 25, 27, 29, 31
AVENIDA VIRGEN DE FATIMA (DE)	1, 2, 3, 4, 5, 6, 7, 8, 9, 10, 11, 12, 13, 14, 15, 16, 17, 18, 19, 20, 21, 22, 23, 24, 25, 26, 27, 28, 29, 30, 31, 33, 34, 35, 36, 37, 38, 39, 40, 41, 42, 43, 44, 45, 46, 47, 48, 49, 50, 51, 52, 53, 54, 55, 56, 57, 58, 59, 60, 62, 64, 66, 68, 70, 72, 74, 76

INFORME DE VIALES DE CÓRDOBA

NOMBRE NORMALIZADO: Córdoba_I_P_05

NOMBRE ÁREA DE INFLUENCIA: Levante - Fátima IP

VIALES DE CÓRDOBA	
Nombre de vía	Rango de portales
AVENIDA VIRGEN DE LINARES	0, 1, 2, 3, 5, 7, 9, 11, 13, 15, 17, 19, 21, 23, 25, 27, 29, 31, 33, 35, 37, 39, 41, 43, 45, 47, 49, 51, 53, 57, 59, 61, 63, 65, 67, 69, 71, 73
CALLE A (LA PONDEROSA)	37, 38, 39, 46, 47, 50, 53, 55, 56, 90
CALLE ABEJAR	1, 2, 3, 4, 5, 6, 7, 8, 9, 10, 11, 12, 13, 14, 15, 16, 17, 18, 19, 20, 21, 22, 23, 24, 25, 26, 27, 28, 29, 30, 31, 32, 33, 34, 35, 36, 37, 38, 39, 40, 42, 46, 48
CALLE ACADEMICO MELENDEZ	1, 2, 3, 4, 5, 6, 7, 8, 9, 10
CALLE ACEBUCHE (EL) (DOÑA MANUELA)	0
CALLE ACEITUNO	1, 2, 3, 4, 5, 6, 7, 8, 9, 10, 11, 12, 13, 14, 15, 16, 17, 18, 19, 20, 21, 22, 23, 25, 27
CALLE AGUILAS (LAS)	1, 2, 3, 5, 6, 7, 8, 10, 14, 16, 18, 19, 20, 21, 23, 24, 26, 27, 28, 30, 32
CALLE ALAMOS (LOS) (DOÑA MANUELA)	3, 4, 5, 7, 8, 9
CALLE ALCANTARA	1, 3, 5, 7, 9, 11, 13, 17, 19, 21, 23, 25, 27, 29, 31, 33, 35
CALLE ALFAREROS (LOS)	64, 65, 89, 90, 91, 92, 93, 94, 95, 96, 97, 98, 99, 100, 101, 102, 103, 104, 105, 106, 115, 116, 117, 118, 119, 122, 123
CALLE ALFAROS	2, 4, 6, 8, 10, 12, 14, 16, 20, 26, 28, 30, 32, 34, 36, 38, 42, 44, 48, 50, 52, 54, 58, 60, 66, 68
CALLE ALFONSO PRIETO "EL CHIQUI"	1, 3, 5, 7, 9
CALLE ALFONSO XII	10, 12, 14, 16, 18, 19, 20, 21, 22, 23, 24, 25, 26, 28, 29, 30, 31, 32, 33, 34, 35, 36, 37, 38, 39, 40, 41, 42, 43, 44, 45, 46, 47, 48, 50, 52
CALLE ALFREDO KRAUS	1, 2, 3, 4, 5, 6, 7, 8, 10, 15, 16, 18, 20, 22, 23, 24, 25, 26, 31
CALLE ALHONDIGUILLA	1, 2, 3, 4, 5, 6, 7, 8, 9, 10, 11, 12, 13, 14, 15, 16, 17, 18, 19, 20, 21, 22, 23, 24, 25, 26, 27, 28, 29, 30, 31, 32, 33, 34, 35, 36, 38, 39, 40, 41, 42, 43, 44, 45, 46, 47, 48, 49
CALLE ALMORAVIDES	1, 2, 3, 4, 5, 6, 7, 8, 9, 10, 11, 12, 14, 16, 18, 20
CALLE ALONSO GOMEZ DE SANDOVAL	1, 2, 3, 4, 5, 6, 7, 8, 10
CALLE ALVAR RODRIGUEZ	1, 3, 4, 5, 6, 7, 8, 9, 10, 11, 12, 13, 14, 16, 18
CALLE ALVARO PAULO	1, 2, 3, 4, 5, 6, 7, 8, 9, 10, 11, 12, 13, 14, 15, 16, 17, 18, 19, 20, 21, 22, 23, 24, 25, 26, 27, 28, 30, 32
CALLE AMALIA RODRIGUES	1, 2, 3, 4, 5, 6, 7, 8, 9, 10, 11, 12, 13, 14, 15, 16, 17, 18, 19, 20, 21, 22, 23, 24, 25, 26, 27, 28, 29, 30, 31, 32, 33, 34, 35, 36, 37, 38, 39, 40, 41, 42, 43, 44, 45, 46, 47, 48, 49, 50, 51, 52, 53, 54, 55, 56, 57, 58, 59, 60, 61, 63, 65, 67, 69, 71, 73, 75, 77, 79, 81, 83, 85, 87, 89, 91, 93, 95, 97, 99, 101, 103, 105, 107, 109, 111, 113, 115, 117, 119, 121, 123, 125, 127, 129, 131, 133
CALLE ANCHA DE LA MAGDALENA	1, 2, 3, 4, 5, 7, 8, 9, 10, 11
CALLE ANGEL MARIA DE BARCIA	1, 2, 3, 4, 5, 6, 7, 8, 9, 10, 11, 12, 13, 14, 15, 17
CALLE ANGELA ROMERO TORRES	1, 2, 4, 5, 6
CALLE ANQUEDA	1, 2, 3, 4, 5, 7, 9, 11, 13, 15
CALLE ANTEQUERA	1, 2, 4
CALLE ANTON DE MONTORO	2, 4, 6, 12
CALLE ANTONIO FERNANDEZ FOSFORITO	1, 2, 3, 4, 5, 6, 7, 8
CALLE ANTONIO MACHIN	2, 3, 4, 6, 8, 10, 12
CALLE ARCOS DE LA FRONTERA	1, 2, 3, 4, 5, 6, 7, 8, 9, 10, 11, 12, 13, 14, 15, 16, 17, 18, 19, 20, 21, 22, 23, 24, 26, 27, 28, 30, 31, 32, 33, 34, 36, 38, 40, 42, 44, 46
CALLE ARENILLAS	1, 2, 3, 4, 5, 6, 7, 8, 9, 10, 11, 12, 13, 14, 15, 16, 17, 18, 19, 20, 22, 24, 26, 28, 30, 32
CALLE ARETHA FRANKLIN	1, 3, 5, 7, 9, 11, 13, 15, 17, 19
CALLE ARRAYANES (LOS)	79, 82, 83, 84
CALLE ARROYO DE SAN ANDRES	1, 2, 3, 4, 5, 6, 7, 8
CALLE ARROYO DE SAN LORENZO	1, 2, 3, 4, 5, 7, 8, 9, 10, 11, 13, 14, 15, 16, 17, 18, 19, 20, 23
CALLE ARROYO SAN RAFAEL	1, 2, 3, 4, 5, 7, 9, 11
CALLE ARTESANOS (LOS)	0, 1, 2, 3, 4, 5, 6, 7, 8
CALLE ASTRONOMA CECILIA PAYNE	1, 4, 21, 22, 23, 24, 25, 26, 27, 28, 29, 31, 32, 33, 81, 86
CALLE ASTRONOMA FATIMA DE MADRID	11, 12, 13, 14, 15, 16, 17, 18, 19, 21, 26, 51, 56, 110, 111, 112
CALLE ASTRONOMA HIPATIA DE ALEJANDRIA	0, 3, 4, 5, 22, 23, 24, 25, 52, 53, 54, 55, 82, 83, 84, 85
CALLE ASTRONOMO AZARQUIEL	0, 11, 12, 13, 15, 16, 17, 18, 31, 32, 33, 34

INFORME DE VIALES DE CÓRDOBA

NOMBRE NORMALIZADO: Córdoba_I_P_05

NOMBRE ÁREA DE INFLUENCIA: Levante - Fátima IP

VIALES DE CÓRDOBA	
Nombre de vía	Rango de portales
CALLE ASTRONOMO EDWIN HUBBLE	7, 11, 12, 13, 14
CALLE ASTRONOMO GALILEO GALILEI	36, 37, 38, 39, 45, 46, 47, 48, 61, 62, 63, 64, 310
CALLE ASTRONOMO KEPLER	31, 32, 33, 34, 35, 41, 42, 43, 44
CALLE AVENIDA PONDEROSA	48, 56, 57, 78, 80, 86, 87
CALLE BALANZONA	1, 2, 3, 4, 5, 6, 7, 8, 9, 10, 11, 12, 14, 16
CALLE BATALLA DE LOS CUEROS	1, 2, 3, 4, 5, 6, 7, 8, 9, 10, 11, 12, 13, 14, 15, 16, 17, 18, 19, 20, 21, 22, 24
CALLE BUEN SUCESO	1, 2, 3, 4, 5, 6, 7, 8, 9, 10, 11, 12, 15
CALLE BUENAVISTA	0, 3, 10
CALLE CAMPO SAN ANTON	1, 3, 5, 7, 9, 11, 13, 15
CALLE CAMPUS UNIVERSITARIO RABANALES	0
CALLE CAPITULARES	2, 4, 6, 8, 10, 12, 14, 16, 18, 20, 22
CALLE CARAVACA DE LA CRUZ	1, 2, 3, 4, 5, 7, 9, 11, 15, 17
CALLE CARCAMO	4, 6, 8, 10, 12, 14, 16, 18
CALLE CARMEN LOPEZ ROMAN	1, 2, 4, 6, 8, 10
CALLE CARTAGO	1, 2, 3, 4, 5, 6, 7, 8, 10, 11, 12, 13, 14, 15, 16, 17, 18, 19, 20, 21, 22, 23, 24, 25, 26, 27, 28, 29, 30, 31, 32, 33, 34, 36, 38, 40, 42
CALLE CEDACEROS	3, 5
CALLE CELIA CRUZ	1, 2, 3, 4, 6, 8, 10, 12, 14
CALLE CERAMICA	1, 2, 3, 4, 5, 6, 7, 8, 9, 10, 11, 12, 13, 14, 15, 16
CALLE CERRO (DEL)	1, 3, 4, 5, 6, 7, 8, 9, 10, 11
CALLE CHAPARRO (EL) (DOÑA MANUELA)	0
CALLE CIDROS	1, 2, 4, 5, 6, 7, 8, 9, 10, 11, 12, 13, 14, 15, 16, 17, 18, 19, 20, 21, 23, 25
CALLE CIEGOS	1, 2
CALLE CINCO CABALLEROS	1, 3, 4, 5, 6, 7, 8, 9, 10, 11, 12, 13, 14, 15, 16, 17
CALLE CISNE (EL)	2, 4, 6
CALLE CIUDAD DE BUCKARA	1, 3, 5, 7
CALLE CIUDAD DE MENGIBAR	1, 3
CALLE COMPAS DE SAN AGUSTIN	0, 4, 6, 8
CALLE COMPOSITOR RAMON MEDINA	1, 2, 3, 4, 5, 6, 7, 8, 9, 10, 11, 12, 13, 14, 15, 16, 17, 18, 19, 20, 21, 22, 24, 26, 28, 30, 32, 34, 36, 38
CALLE CONCEPCION ARENAL	1
CALLE CONCHA PIQUER	1, 2, 3, 4, 5, 6, 7, 8, 9, 10, 11, 12, 13, 15, 17, 19, 21, 23, 25, 27, 29, 31, 33, 35, 37, 39, 41, 54
CALLE CONDE DE ARENALES	0, 1, 2, 3, 4, 5, 6, 7, 8, 10, 12, 14, 16, 18, 20, 22, 24
CALLE CONQUISTADOR BENITO DE BAÑOS	1, 2, 3, 4, 5, 6, 7, 8, 9, 10, 11, 12, 13, 14, 15, 16, 17, 18, 19, 21, 23, 25, 27
CALLE CONQUISTADOR RUIZ TAFUR	1, 2, 3, 4, 5, 6, 7, 8, 9, 10, 11, 12, 13, 14, 15, 16, 18, 20, 22, 24, 26, 28, 30, 32
CALLE CORRALITAS	4, 5, 6, 7, 8, 9, 14, 15, 16, 17, 19, 24, 25
CALLE COSTANILLAS	1, 2, 3, 4, 5, 6, 7, 8, 9, 10, 11, 12, 13, 14, 15, 16, 17, 18, 20, 21, 22, 23, 24, 25, 27, 29, 30, 31, 32, 33, 34, 35, 36, 38, 40, 42, 44
CALLE CRISTO	1, 2, 3, 4, 5, 6, 7, 8, 9, 10, 11, 12, 13, 14, 15, 16, 17, 18, 19, 20, 21, 22, 23, 24, 25, 26, 28, 30, 32
CALLE CRONISTA MARAVER	1, 2, 3, 4, 5, 6, 7, 8, 9, 10, 11, 12, 13, 14, 15, 16, 17, 18, 19, 20, 21, 22, 23, 24, 25, 26, 27, 28, 29, 30, 31, 32, 33, 34
CALLE CRUCIFIJO	1, 2, 3, 5, 7, 9, 11
CALLE CUSTODIO	1, 2, 3, 5, 7
CALLE DALMACIA	1, 2, 3, 4, 5, 6, 7, 8, 9, 10, 11, 12, 13, 14, 15, 16, 17, 18, 19, 20, 22
CALLE DAMIAN DE CASTRO	1, 3, 5, 7, 9, 11, 13, 15, 17, 19, 21, 23, 25, 27, 29
CALLE DIANA (LA)	0, 1, 3, 4, 5, 7, 8, 10, 11, 18, 27, 28
CALLE DIEGO MENDEZ	1, 2, 3, 4, 5, 6, 7, 8, 9, 10, 11, 13, 15, 17, 19
CALLE DOCTOR ANTONIO MANZANARES	1, 2
CALLE DOCTOR GOMEZ AGUADO	1, 2, 3, 4, 6, 8
CALLE DOCTOR JUAN BARBUDO ORTIZ	81, 83
CALLE DOCTOR MANUEL VILLEGAS	1, 2, 3, 4, 5, 6, 7, 8, 9, 10, 11, 12, 14

INFORME DE VIALES DE CÓRDOBA

NOMBRE NORMALIZADO: Córdoba_I_P_05

NOMBRE ÁREA DE INFLUENCIA: Levante - Fátima IP

VIALES DE CÓRDOBA	
Nombre de vía	Rango de portales
CALLE DOCTOR NEVADO DEL REY	1, 2, 3, 4, 5, 6, 7, 8, 9, 10
CALLE DOMINGO BADIA	1, 2
CALLE DOMINGO BAÑOS "DOMINGON"	1, 2, 3, 4, 5, 6, 7, 8, 9, 10, 11, 12, 13, 14
CALLE DON CARLOS ROMERO	1, 2, 3, 4, 5, 6, 7, 8, 9, 10, 11, 12, 13, 14, 15, 16, 17, 18, 19, 20, 22, 24, 26
CALLE DORA LA CORDOBESITA	1, 2, 3, 4, 5, 6, 7, 8, 9, 10, 11, 12, 13, 14, 15, 16, 17, 18, 19, 20, 21, 22, 23, 24, 25, 26, 28, 30, 32, 34, 45
CALLE DUQUE DE LA VICTORIA	0, 1, 3, 4, 5, 6, 7, 9
CALLE EDITH PIAF	1, 2, 4, 5, 7, 9, 11, 13, 15
CALLE EL CHAPARRO	30, 31, 32, 33
CALLE EL MADROÑO	41, 42, 43, 44, 45, 46, 47, 48, 49, 50
CALLE EL NARANJO	35, 36, 37, 38, 39, 40
CALLE EL OLIVO	11, 12, 13, 14, 15, 16
CALLE EL PINO GRANDE	65, 66, 67, 68, 69, 70, 71
CALLE ENCARNACION AGUSTINA	1, 2, 4, 6, 8, 10, 12, 14, 16
CALLE ENCINAR (EL)	10, 11, 12, 13, 14, 15, 16, 17, 18
CALLE ENRICO CARUSO	1, 2, 3, 4, 5, 6, 7, 8, 9, 10, 11, 12, 13, 14, 15, 16, 17, 18, 19, 20, 21, 22, 23, 24, 25, 26, 27, 28, 29, 30, 31, 32, 34, 36, 38, 40, 42, 44, 46
CALLE ENRIQUE REDEL	1, 2, 3, 4, 5, 6, 7, 8, 9, 10, 11, 12, 13, 14, 15, 17
CALLE ERMITA (LA) (TORREBLANCA)	1, 2, 3, 4, 5, 6, 7, 8, 10, 12, 14, 16
CALLE ESCAÑUELA	1, 2, 3, 4, 5, 6, 7, 8, 9, 10, 12, 14, 15, 16, 17, 18, 20, 22, 24, 26, 28
CALLE ESCRITOR AGUAYO GODOY	2
CALLE ESCRITOR ALMEIDA GARRET	0, 1, 2, 4, 6
CALLE ESCRITOR CARDENAS ANGULO	1, 2, 4
CALLE ESCRITOR CARRILLO LASSO	2, 4, 6, 8
CALLE ESCRITOR CRISTOBAL DE CASTRO	1, 2, 3, 4, 6
CALLE ESCRITOR CRISTOBAL DE MESA	1, 2, 4, 6, 7, 8, 10
CALLE ESCRITOR FERNANDEZ FRANCO	1, 3
CALLE ESCRITOR GARCIA DE CERECEDA	1, 2, 3, 4, 5, 6, 7, 8
CALLE ESCRITOR GOMEZ DE RIVERA	1, 2, 3, 4, 6, 8, 9
CALLE ESCRITOR GONZALEZ GUEVARA	1, 2
CALLE ESCRITOR GREGORIO ALFARO	2, 4, 6, 8, 10
CALLE ESCRITOR HOYOS NORIEGA	1, 2, 3, 4, 5, 6, 7, 8, 9, 10, 11, 12, 13, 14, 18, 20, 22
CALLE ESCRITOR JOSE DE LA VEGA	1, 2, 3, 4, 5, 6, 7
CALLE ESCRITOR JOSE DE LOS HEROS	1, 2, 3, 5, 7, 9
CALLE ESCRITOR JUAN ALFONSO DE BAENA	2, 4, 6, 8
CALLE ESCRITOR JULIO CORTAZAR	1, 2, 3, 4, 5, 6
CALLE ESCRITOR LEON MANSILLA	1, 3, 5, 7
CALLE ESCRITOR LOPEZ DE CARDENAS	1, 2, 3, 4, 5, 7
CALLE ESCRITOR LUIS BAÑUELOS	1
CALLE ESCRITOR PEDRO MESSIA	1, 3, 5
CALLE ESCRITOR RAFAEL PAVON	1, 2, 3, 4, 5, 19
CALLE ESCRITOR RAFAEL SANCHEZ FERLOSIO	2, 4, 5, 6
CALLE ESCRITOR TOMAS SANCHEZ	2
CALLE ESCRITORA ANA MARIA MATUTES	2, 4, 6, 8
CALLE ESPARTA	1, 2, 3, 4, 5, 6, 7, 8, 9, 10, 11, 12, 13, 14, 16, 18, 20
CALLE ESPECIEROS	2, 4, 6
CALLE ESPEJO	1, 2, 3, 4, 5, 6, 7, 8, 9, 10, 11, 13
CALLE ESPIEL	1, 3, 5, 7, 9, 11, 13, 15, 17, 19, 21, 23, 25, 27, 29, 31, 33, 35, 37, 39
CALLE ESTRELLA ALTAIR	1, 2, 3, 4
CALLE ESTRELLA SIRIO	2, 4
CALLE ESTRELLITA CASTRO	1, 2, 3, 4, 5, 6, 7, 8, 9, 10, 11, 12, 13, 14, 15, 16, 17, 19, 21, 23, 25, 27
CALLE EUCALIPTO	51, 52, 53, 54, 55, 56, 57, 58, 59, 60, 61

INFORME DE VIALES DE CÓRDOBA

NOMBRE NORMALIZADO: Córdoba_I_P_05

NOMBRE ÁREA DE INFLUENCIA: Levante - Fátima IP

VIALES DE CÓRDOBA	
Nombre de vía	Rango de portales
CALLE EUCALIPTO (DOÑA MANUELA)	11, 18, 19
CALLE FERNAN PEREZ DE OLIVA	1, 2, 4, 6, 7, 8, 9, 10, 11, 13
CALLE FERNANDO DE LARA	4, 6, 8, 10, 12
CALLE FERNANDO IV	1, 2, 3, 4, 6, 8, 10, 22
CALLE FIDELA CAMPIÑA	1, 2, 3, 4, 5, 6, 7, 8, 9, 10, 11, 12, 13, 14, 15, 16, 17, 18, 19, 20, 22, 24, 26
CALLE FLOR DE LA CAMPIÑUELA (LA)	3, 4, 5, 6, 7, 8, 9, 10, 11, 12, 13, 15, 16, 17, 18, 20, 22, 24, 26, 28
CALLE FRAILES	1, 2, 3, 4, 5, 6, 7, 8, 9, 10, 11, 12, 13, 14, 15, 16, 18, 19, 20, 22, 24
CALLE FRANCISCO BORJA PAVON	1, 2, 3, 4, 5, 6, 8, 10, 12, 14, 18, 20, 22
CALLE FRANCISCO DEL ROSAL	2, 3, 4, 5, 6, 7, 8
CALLE FRANCISCO JIMENEZ 'CURRELES'	1, 2, 3, 4, 5, 6, 7, 8, 9, 10, 11, 12, 13, 14
CALLE FRANCISCO MORENO ANGUIA	1
CALLE GAVILANES (LOS)	21, 27, 28, 29
CALLE GERDA TARO	2, 3, 4, 5, 6, 7, 9, 13, 14, 15, 16
CALLE GLORIA LASSO	1, 3, 5, 7, 9, 11, 13, 15, 17, 19, 21, 23, 25, 27, 29, 31, 33, 35
CALLE GOLONDRINA	1, 2, 3, 4, 5, 6, 7, 8, 9, 11, 12, 13, 14, 16, 17, 18, 19, 20, 22, 24, 26, 28
CALLE GRABADOR PALOMINO	1, 3, 5, 7
CALLE GRANJUELA (LA)	1, 2, 3, 4, 5, 6, 7, 8, 9, 10, 11, 12, 13, 14, 15, 16, 17, 18, 19, 20, 21, 22, 23, 24, 25, 26, 27, 28, 29, 30, 31, 32, 33, 34, 35, 36, 37
CALLE GUADAMACILERO DIEGO S. LLORENTE	0
CALLE GUADAMACILERO PEDRO DE SORIA	2, 4
CALLE GUINDOS (LOS)	81, 82, 84, 85
CALLE GUTIERREZ DE LOS RIOS	9, 10, 11, 12, 13, 14, 15, 16, 17, 18, 19, 20, 21, 22, 23, 24, 25, 26, 27, 28, 29, 30, 31, 32, 33, 34, 35, 36, 37, 38, 39, 40, 41, 42, 43, 44, 45, 46, 47, 48, 49, 51, 52, 56, 58, 60, 62, 63
CALLE GUZMANAS	1, 2, 3, 4, 5, 7
CALLE HERMANO JUAN FERNANDEZ	1, 2, 3, 4, 6, 8, 10, 15, 16, 17, 19, 21, 23, 25, 27, 29, 31, 33, 44, 46
CALLE HERMANO LUJAN	1, 2, 4, 6, 8, 10, 12
CALLE HERMANOS LOPEZ DIEGUEZ	0, 1, 2, 3, 4, 5, 6, 7, 8, 9, 10, 11, 12, 13, 15
CALLE HILARIO CAMACHO	1, 3, 5, 7, 9, 11, 13, 15, 17, 19, 21, 23, 26
CALLE HINOJO	1, 2, 3, 4, 5, 6, 7, 8, 9, 10, 11, 12, 14, 16, 18
CALLE HISTORIADOR DOMINGUEZ ORTIZ	0, 1, 2, 3, 4, 5, 7, 13, 15, 17, 19, 21
CALLE HISTORIADOR JAEN MORENTE	2, 3, 4, 5, 6, 7, 8, 9, 10, 11, 12, 13, 14, 15, 16, 17, 18, 19, 20, 21, 22, 23, 24, 25, 26, 27, 28, 29, 30, 32, 34
CALLE HORNILLO	1, 2, 3, 4, 5, 6, 7, 9, 11
CALLE HORNO DEL AGUA	1, 2, 3, 4, 5, 6, 7, 8, 9, 10
CALLE HUERTO DE SAN AGUSTIN	1, 2, 3, 4, 5, 6, 7, 8, 9, 11, 13
CALLE HUERTO DE SAN PABLO	1, 3, 4, 5, 6, 7, 8, 10, 12, 14
CALLE HUMOSA	1, 2, 3, 4, 5, 6, 7, 8, 9, 10, 11, 12, 13, 14, 15, 16, 17, 18
CALLE IMAGENES	1, 2, 3, 4, 5, 6, 7, 9, 10, 12, 13, 14, 15, 17, 19, 21, 23
CALLE IMPERIO ARGENTINA	2, 3, 4, 5, 6, 7, 8, 9, 10, 11, 12, 13, 14, 15, 16, 17, 18, 19, 20, 21, 22, 23, 24, 25, 26, 27, 28, 29, 30, 31, 32, 33, 34, 35, 36, 37, 38, 39, 40, 41, 42, 43, 44, 45, 46, 47, 48, 49, 50, 51, 52, 53, 54, 55, 57, 59, 61, 63, 65, 67, 69, 71, 73, 75
CALLE INGENIERO JUAN ANTONIO VIGUERAS GONZALEZ	2, 4, 6, 8
CALLE ISAAC PERAL	1, 2, 3, 4, 5, 6, 7, 8, 9, 10, 11, 12, 13, 14, 15, 17
CALLE ISABEL II	1, 2, 3, 4, 5, 6, 7, 8, 9, 10, 11, 12, 13, 14, 15, 16, 17, 19, 20, 21, 22, 23, 24, 25, 26, 27, 28, 29
CALLE ISABEL LOSA	3, 4, 6, 8, 10, 12, 14
CALLE ISLAS BALEARES	1, 2, 3, 4, 5, 6
CALLE ISLAS CANARIAS	1, 2, 3, 4
CALLE JAZMIN (CALLE PEATONAL)	2, 4, 6, 8, 10
CALLE JESUS DEL CALVARIO	1, 3, 4, 5, 6, 7, 8, 9, 10, 11, 12, 13, 14, 15, 16, 17, 18, 19, 21, 23, 25, 27, 29, 31, 33, 35, 37
CALLE JESUS NAZARENO	1, 2, 3, 4, 5, 7, 9, 11, 13, 15, 17, 19

INFORME DE VIALES DE CÓRDOBA

NOMBRE NORMALIZADO: Córdoba_I_P_05

NOMBRE ÁREA DE INFLUENCIA: Levante - Fátima IP

VIALES DE CÓRDOBA	
Nombre de vía	Rango de portales
CALLE JOAQUIN ALTOLAGUIRRE	1, 2, 3, 5, 6, 7, 8, 9, 10, 11, 12, 13, 14, 15, 16, 17, 18, 19, 20, 21, 22, 23, 24, 25, 26, 27, 28, 29, 30, 32
CALLE JOSEFA ALONSO PRIETO "LA VINAGRA"	1, 2, 3, 4, 5, 6, 7, 8, 9, 10, 11, 12, 13, 14
CALLE JUAN DE CERVANTES	1, 2, 3, 4, 5, 6, 7, 8, 9, 10, 11, 12, 13, 14, 15, 16, 17, 18, 19, 20, 22, 23, 24, 25, 26, 27, 28, 29, 30, 32, 34, 36, 38, 40, 42
CALLE JUAN PALO	1, 2, 3, 4, 5, 6, 8, 10
CALLE JUAN RUFO	1, 2, 3, 4, 5, 6, 7, 8, 9, 10, 11, 13, 15, 16, 17, 18, 19, 21, 22, 23, 24, 25, 28, 29, 30, 32
CALLE JUAN TOCINO	1, 2, 3, 5, 6, 7, 8, 9, 10, 12, 14, 16, 18, 20
CALLE JUANITA REINA	0, 35
CALLE JUANITO VALDERRAMA	1, 2, 3, 5, 7, 9, 11, 13, 15, 17, 19, 21
CALLE JULIO ALARCON	1, 2, 3, 4, 5, 6, 7, 8, 9, 10, 11, 12, 13, 14, 15, 16, 17, 18, 19, 20, 21, 22, 23, 24, 25, 26, 27, 29
CALLE JULIO CESAR	1, 3, 4, 6, 8, 10, 12, 14, 16, 18, 20, 22
CALLE JULIO VALDELOMAR	1, 2, 3, 4, 5, 6, 7, 8, 9, 10, 11, 12, 13, 14, 15, 16, 18, 20, 22, 24
CALLE JURADO AGUILAR	1, 2, 3, 4, 5, 6, 7, 8, 9, 10, 11, 13
CALLE JURAMENTO	1, 3, 5, 7, 9
CALLE KIKO PASTOR	2
CALLE LA CAMPIÑA	3, 4, 5, 7, 8, 9, 10
CALLE LADERA (LA)	1, 2, 3, 4, 5, 6, 7, 8, 10, 12, 14, 16, 18
CALLE LAS FLORES	62, 63, 64
CALLE LEVANTE	1, 2, 3, 4, 5, 6, 7, 8, 9, 10, 11
CALLE LOPEZ DE ALBA	1, 3, 5, 6, 7, 8, 9, 10, 11, 12, 13, 14, 15, 16, 17, 18, 19, 20, 21, 22, 23, 24, 25, 26, 27, 28, 29, 30, 31, 33
CALLE LOS LAURELES	17, 18, 19, 20, 21, 22, 24, 25, 26, 27, 28, 34
CALLE LUCIANO PAVAROTTI	1, 2, 3, 4, 6, 8, 10, 12, 14, 16, 18, 20, 22, 24, 26, 28, 30, 32, 34, 36, 38, 40, 42, 44, 46, 48, 50, 51, 52, 54, 56, 58, 60, 62, 64, 66
CALLE LUIS VALENZUELA	1, 2, 3, 4, 5, 6, 7, 8, 9, 10, 11, 12, 13, 14, 15, 16, 17, 18, 20, 22, 24, 26, 28
CALLE MAGDALENA	2, 4, 6, 8
CALLE MAGNOLIAS (LAS)	1, 2, 3, 4, 5, 6, 7, 9, 11
CALLE MANCERA	1, 2, 3, 4, 6, 8
CALLE MANCHADO	2, 4, 6, 8, 9, 10, 12
CALLE MANOLO RUBIA	1, 2, 3, 4, 5, 6, 7, 8, 9, 10, 12
CALLE MANUEL SORO "TINTE"	1, 2, 3, 4, 5, 6, 7, 8
CALLE MARIA AUXILIADORA	1, 2, 3, 4, 5, 6, 7, 8, 9, 10, 11, 12, 13, 14, 15, 16, 17, 18, 19, 20, 21, 22, 23, 24, 25, 26, 27, 28, 29, 30, 31, 32, 33, 35, 37, 39, 41
CALLE MARIA DEL VALLE CALDERON	1, 2, 3, 4, 6, 8, 10, 12
CALLE MARIA FERNANDEZ CARMONA "MARIQUITA"	1, 2, 3, 4, 5, 6, 7, 8, 9, 10, 11, 12, 13, 14
CALLE MARIA GALVANY	1, 2, 3, 4, 5, 6, 7, 8, 9, 11
CALLE MARIANO AMAYA	1, 2, 4
CALLE MARLENE DIETRICH	1, 2, 3, 4, 5, 6, 8, 10, 11, 12, 13, 14, 15, 16, 17, 18, 19, 20, 21, 22, 23, 24, 25, 26, 27, 28, 29, 30, 32, 33, 34, 35, 36, 37, 38, 39, 40, 41, 42, 43, 44, 45, 46, 47, 48, 49, 50, 51, 52, 53, 54, 55, 56, 57, 58, 59, 61
CALLE MATARRATONES	2
CALLE MATEO INURRIA	1, 2, 3, 4, 5, 6, 7, 8, 9, 11
CALLE MELLADOS	1, 2, 3
CALLE METALURGICOS (LOS)	34, 35, 36, 37, 38, 39, 40, 41, 42, 43, 44, 45, 46, 47, 48, 49, 50, 51, 52, 53, 54, 55, 56, 57, 58, 59, 60, 61, 62, 63, 66, 67, 68, 69, 70, 71, 72, 73, 74, 75, 76, 77, 78, 79, 80, 81, 82, 83, 84, 85, 86
CALLE MIGUEL DE MOLINA	1, 3, 5, 7, 9, 11, 13, 14, 15, 17, 18, 19, 21, 22, 23, 25, 27, 28, 29, 31, 33, 35, 37, 41, 43, 45, 47, 49, 51, 53, 55
CALLE MIMOSA (LA) (DOÑA MANUELA)	38, 39, 40, 41, 42
CALLE MONTAÑAS	1, 2, 3, 5
CALLE MONTERO	1, 2, 3, 4, 5, 6, 7, 8, 9, 10, 11, 12, 13, 14, 15, 16, 17, 18, 19, 20, 21, 22, 23, 24, 25, 26, 27, 28, 29, 30, 31, 32, 33, 34, 35, 36, 37, 38, 39, 40
CALLE MORALES	1, 2, 3, 4, 5, 7, 9, 11

INFORME DE VIALES DE CÓRDOBA

NOMBRE NORMALIZADO: Córdoba_I_P_05

NOMBRE ÁREA DE INFLUENCIA: Levante - Fátima IP

VIALES DE CÓRDOBA	
Nombre de vía	Rango de portales
CALLE MORISCOS	2, 4, 6, 8, 10, 12, 14, 16, 18, 20, 22, 24, 26, 28, 30, 32, 34, 36, 38, 40
CALLE MUÑICES	1, 2, 3, 4, 5, 6, 7, 8, 9, 10, 11, 12, 13, 17, 19, 21, 23, 25, 27, 29, 31, 33, 35
CALLE MUÑOZ CAPILLA	1, 2, 3, 4, 5, 6, 7, 8, 9, 10, 11, 12, 13, 14, 15, 16, 17
CALLE MURCIA	1, 2, 3, 4, 5, 6, 7, 8, 9, 10, 11, 13
CALLE MURYAM	26, 33, 34, 35, 36, 37, 40, 41, 42, 43
CALLE NIEVES VIEJAS	0, 1, 2, 3, 4, 5, 6, 7, 8, 9, 10, 11, 12, 13, 14, 15, 16, 17, 19
CALLE NINA SIMONE	1, 2, 3, 4, 5, 6, 7, 8, 9, 10, 11, 12
CALLE NUESTRA SEÑORA DE LA MERCED	1, 2, 3, 4, 5, 6, 7, 8, 9, 10, 11, 12, 14, 16, 18, 20, 22, 24, 26, 28, 30
CALLE OBISPO ALGUACIL	1, 2, 3, 4, 5, 6, 7, 8, 10, 11
CALLE OBISPO LOPEZ CRIADO	1, 2, 4, 5, 6, 7, 8, 9, 10, 11, 12, 13, 17, 19
CALLE OCAÑA	1, 2, 3, 4, 5, 7, 9, 11, 13, 15, 17, 19
CALLE OLIVOS (LOS) (TORREBLANCA)	58, 59, 63, 64, 65
CALLE OUM KALSOUM	1, 2, 3, 4, 5, 6, 7, 8, 9, 10, 11, 12, 13, 14, 15, 16, 18, 20
CALLE PACO NATERA	1, 2, 3, 4, 5, 6, 7, 8, 9, 10
CALLE PALAREA	1, 2, 3
CALLE PALMA (LA)	5, 7, 8, 9, 10, 11, 12, 13, 14, 16
CALLE PARRAS	1, 2, 3, 5, 6, 7, 8, 9, 10, 12, 14, 16
CALLE PASTORA	1, 2, 3, 4, 5, 6, 7, 8
CALLE PASTORA PAVON CRUZ	1, 2, 3, 5, 7, 9, 11, 13, 15, 17, 19, 21, 23, 25, 27, 29, 31, 43
CALLE PEDRO FERNANDEZ	1, 2, 3, 4, 5, 6, 7, 8, 9, 10, 11, 12, 13
CALLE PEDRO LOPEZ	1, 3, 5, 7, 9, 11, 13, 15, 17, 19, 20, 21, 22, 24, 25, 26, 27, 28, 29, 30
CALLE PEDRO VERDUGO	1, 2, 3, 4, 5, 6, 7, 8, 10, 12, 14
CALLE PELAYO CORREA	2, 3, 4, 5, 6, 7, 8, 9, 10, 11, 12, 13, 14, 16, 18
CALLE PELETEROS (LOS)	11
CALLE PEÑA	1, 2, 3
CALLE PERAL	1, 2, 3, 4, 5
CALLE PERIODISTA GARCIA NIELFA	1, 2, 4, 6
CALLE PERIODISTA PEDRO ALVAREZ	2
CALLE PINTOR BERMEJO	1, 3, 4, 5, 6, 7, 8
CALLE PINTOR EMILIO SERRANO	2, 3, 5
CALLE PINTOR GARCIA GUIJO	2, 4, 6, 8, 10, 12
CALLE PINTOR MATISSE	2, 4, 6, 8, 10, 12, 14
CALLE PINTOR PEDRO ROMANA	1, 2, 3, 4, 5, 7
CALLE PINTOR SALO	1, 2, 4, 6, 8
CALLE PLATERO LUCAS VALDES	1, 2, 3, 4, 5, 6, 7, 8, 9, 10, 12, 14
CALLE PLATERO PEDRAJAS	1, 2, 3, 4, 5, 6, 7, 8, 9, 10
CALLE PLATERO PEDRO DE BARES	1, 2, 3, 4, 5, 6, 7, 8, 9, 10, 11, 12, 13, 14, 15, 16, 17, 18, 19, 20, 21, 22, 23, 24, 25, 26, 27, 28, 29, 30, 31, 32, 33, 35, 36, 37, 38, 39, 40, 41, 42, 43, 44, 45, 47
CALLE PLATERO PEDRO SANCHEZ DE LUQUE	1, 2, 3, 4, 5, 6, 7, 8, 9, 10, 12
CALLE PLATERO REPISO	1, 2, 4, 6, 8, 10, 12, 14, 16, 18, 20, 22, 24, 26
CALLE PLATERO SANCHEZ DE LA CRUZ	1, 2, 3, 4, 5, 6, 7, 8, 10
CALLE PLATEROS (CAMPIÑUELA BAJA)	2
CALLE PLEITINEROS	1
CALLE POETA BLANCO CRIADO	1, 2, 3, 4, 5, 6, 7, 8, 10, 12
CALLE POETA MUHAMMAD IQBAL	1, 2, 3, 4, 6, 8
CALLE POETA SOLIS	1, 2, 3, 4, 6, 8, 10, 12
CALLE POLACAS	1, 2, 3
CALLE POLICHINELA	2, 4, 5, 7, 9
CALLE POZANCO	1, 2, 3, 4, 5, 6, 8, 9, 10, 11, 12, 13, 17, 19, 21
CALLE POZO DE DOS BOCAS	1, 2, 4, 6, 15
CALLE PRIMERO DE MAYO	2, 4, 6, 8, 10, 12

INFORME DE VIALES DE CÓRDOBA

NOMBRE NORMALIZADO: Córdoba_I_P_05

NOMBRE ÁREA DE INFLUENCIA: Levante - Fátima IP

VIALES DE CÓRDOBA	
Nombre de vía	Rango de portales
CALLE PROFESOR TIERNO GALVAN	1, 2, 4, 6, 8, 10
CALLE PROLONGACION ESCAÑUELA	1, 2, 3, 4, 5, 6, 8, 10, 12, 18
CALLE PUERTA DEL RINCON	2, 4, 6, 8, 10, 12, 14, 16, 18, 20, 22, 24, 26
CALLE PUERTA PLASENCIA	2, 4, 6, 8, 10, 14, 16, 18, 20, 22, 24, 26, 28
CALLE QUESO	0, 1, 2, 3, 4, 5, 9, 11, 13, 15, 17, 19
CALLE RAFAEL PEREZ LEON (CUATRO REAL)	1, 2, 4, 6, 8, 10, 12, 14
CALLE RASTRERA	1, 2
CALLE REALEJO	1, 2, 3, 4, 5, 6, 7, 8, 10, 12
CALLE REGINA	0, 1, 2, 3, 4, 5, 6, 7, 8, 9, 10, 14, 16
CALLE REINA MERCEDES	1, 2, 3, 4, 5
CALLE REJAS DE DON GOME	2, 4, 6, 8, 9, 10, 11, 12, 13, 15
CALLE RENATA TEBALDI	2, 4, 6, 8, 10, 12, 14, 16, 18
CALLE RINCONADA SAN ANTONIO	1, 2, 3, 4, 5, 6, 7, 8, 9, 10, 11, 12, 13, 14, 15, 17, 19
CALLE RIO GUADAJOZ	1, 2, 3, 4, 5, 6, 7, 8
CALLE RIVAS Y PALMA	1, 2, 3, 4, 5, 6, 7, 8, 9, 10
CALLE RODRIGUEZ MARIN	3, 5
CALLE ROELAS	1, 2, 3, 4, 5, 6, 7, 8, 10, 12, 14, 16
CALLE RONDA DE ANDUJAR	1, 2, 3, 4, 5, 6, 7, 8, 9, 10, 11, 12, 13, 14, 15, 16, 17, 18, 19, 21, 22, 23, 24, 26
CALLE RONDA DE LA MANCA	1, 2, 3, 4, 5, 6, 7, 9, 12, 13, 45, 47, 49, 51, 53, 55
CALLE RONDA DEL MARRUBIAL	0, 1, 2, 11, 19, 21, 23, 25, 33
CALLE SAGUNTO	0, 1, 2, 3, 4, 5, 6, 7, 8, 9, 10, 11, 12, 13, 14, 15, 16, 17, 18, 19, 20, 21, 22, 23, 24, 25, 26, 27, 28, 29, 30, 31, 32, 33, 34, 35, 36, 37, 39, 41, 43, 45, 47, 49, 51, 53, 55, 57, 59, 61, 63, 65, 67, 69, 71, 73
CALLE SALVADOR ALLENDE	1
CALLE SAN ACISCLO	2, 3, 4, 5, 6, 7, 8, 9, 10, 11, 12, 13, 14, 15, 16, 17, 18, 19, 20, 21, 22, 23, 24, 25, 27, 28, 29, 30, 31, 32, 33, 34, 35, 36, 37, 38, 39, 40, 41, 42, 44, 46
CALLE SAN AGUSTIN	1, 2, 3, 4, 5, 6, 7, 8, 9, 10, 11, 12, 14, 16, 18, 20, 22, 24, 26
CALLE SAN ELOY	1, 3, 5, 7, 31
CALLE SAN FRANCISCO DE SALES	0, 1, 3, 5, 7
CALLE SAN ISIDORO	1, 2, 3, 4, 5, 6, 8, 10, 12, 14
CALLE SAN JUAN DE PALOMARES	1, 2, 3, 4, 5, 6, 7, 8, 9, 10, 11, 12, 13, 14, 15, 16, 17, 18, 19, 21, 23
CALLE SAN PABLO	1, 2, 3, 4, 5, 6, 7, 8, 9, 10, 11, 12, 13, 14, 15, 16, 17, 18, 19, 20, 21, 22, 23, 24, 25, 26, 27, 28, 30, 32, 34
CALLE SAN PERFECTO	1, 2, 3, 4, 5, 6, 7, 8, 9, 10, 11, 12, 13, 14, 15, 16, 17, 18, 19, 20, 21, 22, 23, 24, 25, 26, 27, 28, 29
CALLE SANTA INES	1, 2, 3, 4, 5, 6, 7, 8, 10, 11, 12, 14
CALLE SANTA ISABEL	1, 2, 4, 5, 6, 7, 8, 9, 10, 11, 12, 13
CALLE SANTA MARIA DE GRACIA	1, 2, 3, 4, 5, 6, 7, 8, 9, 10, 11, 12, 13, 14, 15, 16, 17, 18, 19, 20, 21, 22, 23, 24, 25, 26, 27, 30, 32, 34, 36, 38
CALLE SANTA MARTA	1, 2, 3, 4, 6, 7, 8, 9, 10, 11, 13
CALLE SANTO DOMINGO SAVIO	1, 2, 3, 5, 7
CALLE SIMANCAS	1, 2, 3, 4, 5, 6, 7, 8, 9, 10, 11, 12, 13, 14, 15, 17
CALLE TAFURES	2, 4, 5, 7, 8, 10, 12, 14
CALLE TEJAR DE LA CRUZ	1, 2, 3, 4, 5, 6, 7, 8, 9
CALLE TERESA LOPEZ, CHIQUITA PICONERA	12, 19, 20, 21, 22, 23, 27, 28, 29, 30
CALLE TOMILLAR	1, 3
CALLE TORRE DE SAN ANDRES	1, 2, 3, 4, 5, 6, 7, 9, 11
CALLE TRAS LA PUERTA	1, 2, 3, 5
CALLE TRINITARIO PADRE MANUEL FUENTES	1, 2
CALLE TRUEQUE	1, 2, 3, 4, 6, 8
CALLE UNIVERSIDAD DE CORDOBA	1, 2, 4, 7, 9, 65, 66, 67, 68

INFORME DE VIALES DE CÓRDOBA

NOMBRE NORMALIZADO: Córdoba_I_P_05

NOMBRE ÁREA DE INFLUENCIA: Levante - Fátima IP

VIALES DE CÓRDOBA	
Nombre de vía	Rango de portales
CALLE VACAR (EL)	1, 2, 3, 4, 5, 6, 7, 8, 9, 10, 11, 12, 13, 14, 15, 16, 17, 18, 19, 20, 21, 22, 23, 24, 25, 26, 27, 28, 29, 30, 31, 32, 33, 34, 35, 36, 37, 38, 39, 40, 42, 44, 46
CALLE VALSEQUILLO	1, 2, 3, 4, 5, 6, 7, 8, 9, 10, 12, 13, 14, 15, 16, 17, 18, 19, 20, 21, 22, 23, 24, 25, 26, 27, 28, 29, 30, 31, 32, 34, 36, 38, 40
CALLE VAZQUEZ VENEGAS	1, 2, 3, 4, 5, 6, 7, 8, 10, 12
CALLE VELASCO	1, 2, 3, 4, 5, 6, 8
CALLE VEREDA DE LA ALCAIDIA	1, 2
CALLE VIDRIEROS (LOS)	87, 88
CALLE VILLAHARTA	1, 2, 3, 4, 5, 6, 7, 8, 9, 10, 11, 12, 13, 14, 15, 16, 17, 18, 19, 20, 21, 22, 23, 24, 25, 26, 27, 28, 29, 30, 31, 32, 33, 34, 35, 36, 37, 38, 39, 40, 42, 44, 46
CALLE VILLALONES	1, 2, 3, 4
CALLE VINO TINTO	19
CALLE VIRGEN DE VILLAVICIOSA	2
CALLE ZAMORANO	1, 2, 3, 4, 5, 6, 7, 8, 9, 10, 11, 12, 13, 14
CALLE ZARCO	1, 2, 3, 4, 5, 6, 7, 8, 9, 10, 11, 12, 13, 14, 15, 16, 17, 18, 20, 22
CALLEJA BEATAS (DE LAS)	1, 2, 3, 4, 5, 6, 8
CALLEJA BUENOS VINOS (DE LOS)	1, 3, 5, 7
CALLEJA ROSALAS	1, 2, 3, 4, 5, 6, 7, 8, 9, 10, 11
CAMINO CAMPIÑUELA BAJA (A LA)	0, 1, 3, 5, 6, 7, 8, 9, 23, 26, 27, 97
CARRETERA CO-31	64, 74, 75, 88
CARRETERA CO-3101	5, 7, 71, 72
CARRETERA N-432A - ALMADEN (DE)	0, 1, 2, 3, 4, 18, 20, 21, 22, 23, 29, 30, 31, 40, 41, 42, 43, 60, 61, 62, 77, 78, 265
JARDINES MUSICO PEDRO GAMEZ LASERNA (DEL)	0
PASAJE ARQUITECTO FELIX HERNANDEZ	1, 2, 3, 4
PASAJE ARROYO DE PEDROCHES	1, 3
PASAJE BUENAVISTA	2, 4, 6, 8
PASAJE CHICLANA (DE)	1, 3
PASAJE CIUDAD DE ARCHIDONA	1, 2, 3, 4, 5, 6
PASAJE CRISTO DEL REMEDIO DE ANIMAS	1
PASAJE DELINEANTES (DE LOS)	1, 2, 3, 4
PASAJE ESCRITOR PEREZ DE RIVAS	1, 2, 3, 4, 5, 6, 7, 8, 9
PASAJE ESCULTOR COLLAUT VALERA	2, 4
PASAJE ESCULTOR FELIPE RIVAS	1, 2
PASAJE ESTEPONA (DE)	1, 3, 5, 7
PASAJE GONZALEZ DEL CAMPO	1, 2, 3, 4, 5, 6, 7, 8, 9, 10
PASAJE MUSICO JIMENEZ ROMAN	1, 2, 4
PASAJE NILO	1, 2, 3, 4
PASAJE PINTOR ESCALANTE	7, 9
PASAJE PINTOR PELLICER	1, 2
PASAJE POETA BAENA YUSTE	1, 2, 3, 4, 6, 7, 8, 9, 10
PASAJE POETA MANUEL REINA	1, 3
PASAJE PUERTO DE SANTA MARIA	1, 3
PASAJE SOCIEDAD DE PLATEROS	12
PLAZA ALCAIDIA (DE LA)	1, 2, 3
PLAZA ARZOBISPO ROMERO MENGIBAR	1, 2
PLAZA BEATILLAS (DE LAS)	2
PLAZA CABALLOS (DE LOS)	2, 3, 4
PLAZA CONDE DE GAVIA (DEL)	15
PLAZA CRISTO DE GRACIA	1, 2, 3, 4, 5, 7, 8, 9
PLAZA CUBA (DE)	5, 7

INFORME DE VIALES DE CÓRDOBA

NOMBRE NORMALIZADO: Córdoba_I_P_05

NOMBRE ÁREA DE INFLUENCIA: Levante - Fátima IP

VIALES DE CÓRDOBA	
Nombre de vía	Rango de portales
PLAZA DIAMANTINO GARCIA	1, 2, 3, 4, 5, 6, 7, 8
PLAZA DON ARIAS	1
PLAZA DON GOME (DE)	2, 3
PLAZA DON LUIS VENEGAS	2, 3, 4, 5, 6, 7, 8, 9, 10, 11, 12, 13, 14, 15, 16, 17, 18, 19, 20, 21, 22, 23, 24, 25, 26
PLAZA ESCRITOR PEÑA AGUAYO	1, 2, 3, 4
PLAZA ESCULTOR RUIZ OLMOS (DEL)	1, 2, 3, 4, 5, 6, 7, 8, 9, 10, 11, 12, 13, 14, 15, 16
PLAZA FELIX RODRIGUEZ DE LA FUENTE	1, 2, 3, 4, 5, 6, 7, 8, 9
PLAZA FUENSECA (DE LA)	1, 2, 3
PLAZA GAMO (DEL)	1
PLAZA HUERTO HUNDIDO (DEL)	2, 3, 4
PLAZA JAZMIN	1, 3, 5, 7, 9
PLAZA LAHORE	1, 2, 3, 4, 5, 6
PLAZA MAGDALENA (DE LA)	0, 1, 2, 3, 4, 5, 6, 7, 8, 9, 11, 12, 13
PLAZA MAHATMA GANDHI	0
PLAZA MANZANO (DEL)	1, 2, 3
PLAZA MARINALEDA (DE)	1, 2, 3, 4, 5, 6, 7, 9, 11, 13
PLAZA OCA (LA)	1, 2, 3, 4
PLAZA ORIVE (DE)	1, 2
PLAZA PADRE CRISTOBAL	1
PLAZA PINTOR ITURRINO	1, 2
PLAZA POETA JUAN BERNIER (DEL)	1
PLAZA PUERTA DEL RINCON	3
PLAZA REALEJO (DEL)	2, 4, 6, 8, 10
PLAZA REGINA (DE)	1, 2, 3, 4
PLAZA SAN AGUSTIN	1, 2, 3, 4, 5, 6, 7
PLAZA SAN ANDRES	1, 2, 3, 4, 5
PLAZA SAN BARTOLOME (DE)	2, 3, 4, 5, 6
PLAZA SAN ELOY (DE)	9, 11, 13, 15, 17, 21, 23, 25, 27, 29, 31
PLAZA SAN JUAN DE LETRAN (DE)	1, 2, 3, 5, 6, 7, 8, 9
PLAZA SAN LORENZO (DE)	1, 2, 3, 4, 5, 8, 9, 10, 11
PLAZA SAN RAFAEL (DE)	1, 2, 3, 5, 6, 7, 8
PLAZA SANTA MARINA (DE)	2, 3, 4, 5, 7
PLAZA TAZAS (DE LAS)	1, 2, 3, 4, 5, 8, 9, 10, 11, 12, 13, 14
TRAVESIA PADRES MOHEDANO	1, 3, 5
URBANIZACION ARROYO DE LAS ADELFA	1, 2, 3, 4, 5, 6, 7, 8, 9
URBANIZACION COLINA (LA)	0, 1, 2, 3, 4, 5, 6, 7, 8, 9, 11, 12, 13, 14, 15, 16, 17, 18, 19, 20, 21, 22, 23, 24, 25, 26, 27, 28, 29, 30, 31, 32, 33, 35, 36, 37, 38, 39, 40, 41, 42, 43, 45, 46, 47, 48, 49, 50, 51, 52, 53, 55, 56, 57, 58, 59, 60, 61, 62, 63, 64, 67, 68, 69, 71, 73, 74, 80, 81, 82, 83, 84, 86, 87, 89, 90, 91, 92, 93, 94, 95, 97, 98, 99, 100, 101, 102, 103, 104, 105, 106, 138, 141, 142, 143, 144, 145, 146, 148, 149, 150
URBANIZACION DOÑA MANUELA	0, 1, 3, 4, 5, 6, 7, 9, 11, 12, 13, 14, 15, 16, 17, 18, 19, 21, 22, 23, 24
URBANIZACION PEÑA TEJADA	1, 5, 6, 7, 8, 9, 10, 11, 12, 13, 14, 15, 16, 17, 18, 19, 20, 21, 22, 23, 24, 25, 26, 28

INFORME DE VIALES DE CÓRDOBA

NOMBRE NORMALIZADO: Córdoba_I_P_05

NOMBRE ÁREA DE INFLUENCIA: Levante - Fátima IP

Áreas limítrofes:

Área de influencia limítrofe	Centros del área limítrofe
Zoco - Ciudad Jardín IP	14001529 - C.E.I.P. Enríquez Barrios Calle Maestro Priego López, 1 14001657 - C.E.I.P. Salvador Vinuesa Calle Periodista Quesada Chacón, 65 14001724 - C.E.I.P. Al-Ándalus Calle Vicente Aleixandre, s/n 14001891 - C.E.I.P. Santos Mártires Calle San Bartolomé, 4 14002212 - C.D.P. Espinar Calle Maese Luis, 26 14002251 - C.D.P. Reales Escuelas Pías de la Inmaculada Concepción y San Francisco Javier Plaza de la Compañía, 6 14002364 - C.D.P. Nuestra Señora de la Piedad Plaza de las Cañas, 3 14002467 - C.D.P. Sagrado Corazón Plaza de San Juan, 2 14002595 - C.D.P. San Rafael Calle Antonio Maura, 37 14002686 - C.D.P. Santa Victoria Calle Santa Victoria, 1 14002790 - C.D.P. Virgen de la Fuensanta Calle Diego Serrano, 17 14006931 - C.D.P. Zaida Calle Previsión, 3 14007672 - C.E.I.P. Eduardo Lucena Avenida Guerrita, s/n 14008101 - C.E.I.P. Vista Alegre Calle Tomás de Aquino, s/n 14012473 - C.D.P. Trinidad Calle Pepe Espaliú, s/n 14600759 - C.E.I.P. Ciudad Jardín Calle Previsión, 18 14600981 - C.E.I.P. Mirasierra Calle Del Campo, 17. Urb. Azahara 14601156 - C.E.I.P. Europa Calle Doctor Manuel Ruiz Maya, s/n
Fuensanta - Cañero IP	14001487 - C.E.I.P. Caballeros de Santiago Plaza de Valdelagrana, 3

INFORME DE VIALES DE CÓRDOBA

NOMBRE NORMALIZADO: Córdoba_I_P_05

NOMBRE ÁREA DE INFLUENCIA: Levante - Fátima IP

Área de influencia limítrofe	Centros del área limítrofe
	14001645 - C.E.I.P. Alcalde Jiménez Ruiz Calle Miguel Ángel Orti Belmonte, 2
	14001669 - C.E.I.P. Santuario Avenida Calderón de la Barca, s/n
	14001694 - C.E.I.P. Algafequi Calle Periodista Gago Jiménez, 1
	14002170 - C.D.P. Cervantes Avenida de la Fuensanta, 37
	14002455 - C.D.P. Sagrada Familia Plaza de Aguayos , 3
	14002601 - C.D.P. San Rafael Calle Peñas Cordobesas, 2
	14002613 - C.E.PR. San Vicente Ferrer Calle Fernando Camacho, 50
	14007234 - C.E.I.P. Fernán Pérez de Oliva Calle Arquitecto Sáenz de Santamaría, s/n
	14601053 - E.I. Parque de Fidiana Calle Paco León, s/n
	14601132 - C.D.P. Virgen de la Fuensanta Calle Cáñamo, s/n
Tablero - Santa Rosa - Valdeolleros IP	14001505 - C.E.I.P. Colón Plaza de Colón, s/n
	14001736 - C.E.I.P. José de la Torre y del Cerro Calle Virrey de Ceballos, 2
	14001761 - C.E.I.P. Ntra. Sra. de Linares Calle Lope de los Ríos, 13
	14001773 - C.E.I.P. Cronista Rey Díaz Calle Cronista Rey Díaz, 4
	14002157 - C.D.P. Calasancio Calle Madres Escolapias, 90
	14002200 - C.D.P. Divina Pastora Calle Conde de Torres Cabrera, 15
	14002236 - C.D.P. Ferroviario Plaza de Colón, s/n
	14002327 - C.D.P. La Milagrosa Calle Conde de Gondomar, 4
	14002492 - C.D.P. San Acisclo y Santa Victoria Calle Téllez de Meneses, s/n
	14002777 - C.D.P. Virgen del Carmen Calle Alonso el Sabio, 14
	14002807 - C.D.P. Santa Victoria 2

INFORME DE VIALES DE CÓRDOBA

NOMBRE NORMALIZADO: Córdoba_I_P_05

NOMBRE ÁREA DE INFLUENCIA: Levante - Fátima IP

Área de influencia limítrofe	Centros del área limítrofe
	Calle Párroco Agustín Molina, 24
	14003046 - C.D.P. El Nido
	Calle Ciudad de Moncada, 7
	14007271 - C.E.I.P. Hernán Ruiz
	Pasaje Pintor Reinoso, s/n
	14007982 - C.E.I.P. Pablo García Baena
	Calle Teruel, s/n
	14008007 - C.D.P. Almanzor
	Calle Asomadillas, 6
	14600644 - E.I. Cruz de Juárez
	Calle Antonio Barroso y Castillo, 1
	14601193 - C.E.I.P. Torre Malmuerta
	Calle Cronista Salcedo Hierro, s/n.